



**HAL**  
open science

## Development of a new MR Elastography protocol to measure the functional properties of facial muscles

R. Ternifi, P. Pouletaut, Stéphanie Dakpé, Sylvie Testelin, Bernard Devauchelle, F. Charleux, Jean-Marc Constans, S. Bensamoun

### ► To cite this version:

R. Ternifi, P. Pouletaut, Stéphanie Dakpé, Sylvie Testelin, Bernard Devauchelle, et al.. Development of a new MR Elastography protocol to measure the functional properties of facial muscles. 44ème congrès de la société de Biomecanique, société de Biomecanique, Oct 2019, Poitiers, France. 10.1080/10255842.2020.1714926 . hal-02172084

**HAL Id: hal-02172084**

**<https://utc.hal.science/hal-02172084v1>**

Submitted on 3 Jul 2019

**HAL** is a multi-disciplinary open access archive for the deposit and dissemination of scientific research documents, whether they are published or not. The documents may come from teaching and research institutions in France or abroad, or from public or private research centers.

L'archive ouverte pluridisciplinaire **HAL**, est destinée au dépôt et à la diffusion de documents scientifiques de niveau recherche, publiés ou non, émanant des établissements d'enseignement et de recherche français ou étrangers, des laboratoires publics ou privés.

# Development of a new MR Elastography protocol to measure the functional properties of facial muscles

R. Ternifi<sup>1\*</sup>, P. Pouletaut<sup>1</sup>, S. Dakpé<sup>2</sup>, S. Testelin<sup>2</sup>, B. Devauchelle<sup>2</sup>, F. Charleux<sup>3</sup>, J.M. Constans<sup>2,4</sup>, S.F. Bensamoun<sup>1</sup>

<sup>1</sup> Sorbonne University, Université de Technologie de Compiègne, UMR CNRS 7338 Biomechanics and Bioengineering, Centre de Recherches de Royallieu, Compiègne, France

<sup>2</sup> Facing Faces Institute, Department of Maxillofacial Surgery, Amiens University Medical Center, Amiens, France.

<sup>3</sup> ACRIM-Polyclinique Saint Côme, Radiologie Médicale, Compiègne, France

<sup>4</sup> Imagerie et Radiologie Médicale, EA 7516 CHIMERE, Université de Picardie Jules Verne, CHU Amiens, France

**Keywords:** zygomatic major ; muscle tissue elasticity ; Magnetic Resonance Elastography.

## 1. Introduction

The face expression is animated by the movements of the muscles, which can be altered during pathology. Assessment of facial muscle deficits is subjective (palpation), dependent operator, and is currently estimated with clinical scales (Kanerva et al. 2006). Thus, the quantification of the facial muscle functional properties is a key point for the clinician to adapt and evaluate treatments (surgical, injection or re-education) for patients with facial paralysis. Magnetic resonance elastography (MRE) has been developed to measure the in vivo elastic properties of healthy (Chakouch et al. 2016) and pathological (Bensamoun et al. 2015) muscles. The objective of this study is to develop a new imaging protocol to evaluate the functional properties of the zygomaticus major (ZM) muscle using MRE technique.

## 2. Methods

### 2.1 Magnetic Resonance Elastography (MRE)

MRE was conducted with a 1.5T Signa HDx MR machine (General Electric, Milwaukee, WI, USA) on three healthy participants in a supine position. To characterize the ZM muscle, in a relax state, a pneumatic driver was placed below the zygomatic bone in the direction of the corner of the mouth (Figure 1-A). This driver has a rectangular mouthpiece (1.5 cm x 2.5 cm) and is surrounded with a pad. To ensure good transducer contact, a pad was added to the top of the driver that induced no movement when the head coil (32 channels) was added. Periodic variations in air pressure were induced inside the tube at 90 Hz resulting in the propagation of acoustic waves within the facial muscles. The MRE pulse sequence included a motion-encoding gradient, that oscillated in the Z direction, was used to image the displacement of the shear waves.

### 2.2 Anatomical and phase images

MRI acquisition of the ZM is a challenge due to its thin morphology and long structure. In the present study, anatomical axial T1-weighted images (Figure 1-B) of the ZM were evaluated using a specific MRI protocol developed by the Radiology Department at CHU Amiens in collaboration with maxillofacial surgeons.

Then, an oblique scout was placed in the ZM to track the propagation of the shear waves. The wave displacement phase images were recorded with a 256 x 256 acquisition matrix, two opposite polarities of the motion-encoding gradient (with a 2.2 G/cm maximum amplitude limit) in the Z direction, a flip angle of 25°, a 18 cm field of view, a 1.5 mm slice thickness and 4 offsets were recorded. The scan time was 45 seconds with a TR/TE of 55.5/19.1 ms.

### 2.3 Phase image processing and data analyses

The recorded phase images underwent post processing by applying a mask that removed the noise located in the background of the image. A directional filter oriented along the direction of the wave propagation and a Butterworth spatial filter were applied to simultaneously remove interfering waves, longitudinal waves, and noise (Manduca et al. 2003).

Assuming that the ZM muscle was linearly elastic, isotropic, homogeneous and incompressible, the shear modulus ( $\mu$ ), representing the local elasticity, was calculated using the following equation:  $\mu = \rho (f \lambda)^2$  where  $\rho$  is the muscle density and was assumed to be close to that of water (i.e. 1000 kg/m<sup>3</sup>),  $f$  is the frequency and  $\lambda$  is the wavelength.

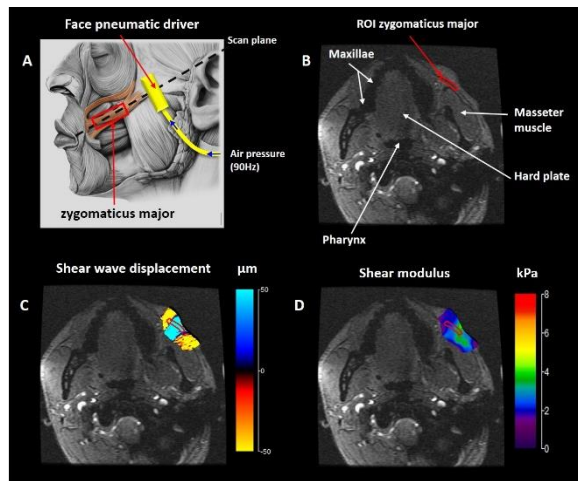


Figure 1. MRE protocol developed for the ZM muscle. A: Localization of the scan plane through the ZM and the face pneumatic driver. B: Anatomical axial T1 image with the ZM surrounded by red region of interest (ROI). C: Phase image showing the shear wave displacement. D: Cartography of the shear modulus.

### 3. Results and discussion

Figure 1-C shows a clear propagation of the shear wave within the cheek tissues (ZM, fat, etc ...). The shear modulus ( $\mu$ ) value, measured from a ROI placed around the ZM, was  $2.45 \pm 0.32$  kPa. However, the displacement of the waves was not only within the individual ZM muscle, leading difficult the interpretation of the elastic properties of this muscle.

Thus, the imaging protocol should be further improved to generate shear wave only within this thin muscle. Indeed, clinicians need to quantify the functional behavior of ZM before and after treatment and to test the effectiveness of therapies.

A solution could be to adjust the power and the design of the pneumatic drivers for such tiny muscles. Another improvement could be to develop acupuncture needle pneumatic drivers, such as those used for invasive muscle electromyography, to generate shear waves via longitudinal vibrations of the needle within the ZM. This type of driver has been applied to livers of mice using 3T MRI to assess fibrosis (Yin et al. 2017). However, the application of such needle driver to the human face seems impossible (invasive and uncomfortable) to incorporate into patient care.

In addition to clinical application, the present MRE protocol could provide the real in vivo functional properties of the ZM muscle which could be implemented in numerical models of facial expression (Esteve-Altava et al. 2015; Fan et al. 2017).

### 4. Conclusions

The originality has been to develop a new MRE protocol for thin muscles ( $<3\text{mm}$ ) and it remains technological challenges. The present study is the first to demonstrate the utility of MR elastography in the regular care of facial palsy patients and paves the way for other applications.

### Acknowledgements

This work was supported by Hauts de France Region and Equipex Figures. We thank the Mayo Clinic (Dr Ehman, elastography department) for its technical support.

### References

- Bensamoun, S.F., F. Charleux, L. Debernard, C. Themar-Noel, and T. Voit. 2015. "Elastic Properties of Skeletal Muscle and Subcutaneous Tissues in Duchenne Muscular Dystrophy by Magnetic Resonance Elastography (MRE): A Feasibility Study." *IRBM* 36 (1): 4–9.
- Chakouch, Mashhour K., Philippe Pouletaut, Fabrice Charleux, and Sabine F. Bensamoun. 2016. "Viscoelastic Shear Properties of in Vivo Thigh Muscles Measured by MR Elastography." *JMRI* 43(6):1423-33.
- Esteve-Altava, Borja, Rui Diogo, Christopher Smith, Julia C. Boughner, and Diego Rasskin-Gutman. 2015. "Anatomical Networks Reveal the Musculoskeletal Modularity of the Human Head." *Scientific Reports* 5 (1): 8298.
- Fan, Ang-Xiao, Stéphanie Dakpé, Tien Tuan Dao, Philippe Pouletaut, Mohamed Rachik, and Marie Christine Ho Ba Tho. 2017. "MRI-Based Finite Element Modeling of Facial Mimics: A Case Study on the Paired Zygomaticus Major Muscles." *Comp Meths in Biomechanics and Biomedical Engineering* 20 (9). Taylor & Francis: 919–928.
- Kanerva, Mervi, Tuija Poussa, and Anne Pitkäranta. 2006. "Sunnybrook and House-Brackmann Facial Grading Systems: Intrarater Repeatability and Interrater Agreement." *Otolaryngology-Head and Neck Surgery* 135 (6): 865–871.
- Manduca, A., D. S. Lake, S. A. Kruse, and R. L. Ehman. 2003. "Spatio-Temporal Directional Filtering for Improved Inversion of MR Elastography Images." *MIA* 7 (4): 465–473.
- Yin, M., K.J. Glaser, A. Manduca, T. Mounajjed, H. Malhi, D.A. Simonetto, R. Wang, et al. 2017. "Distinguishing between Hepatic Inflammation and Fibrosis with MR Elastography." *Radiology* 284 (3): 1–12.